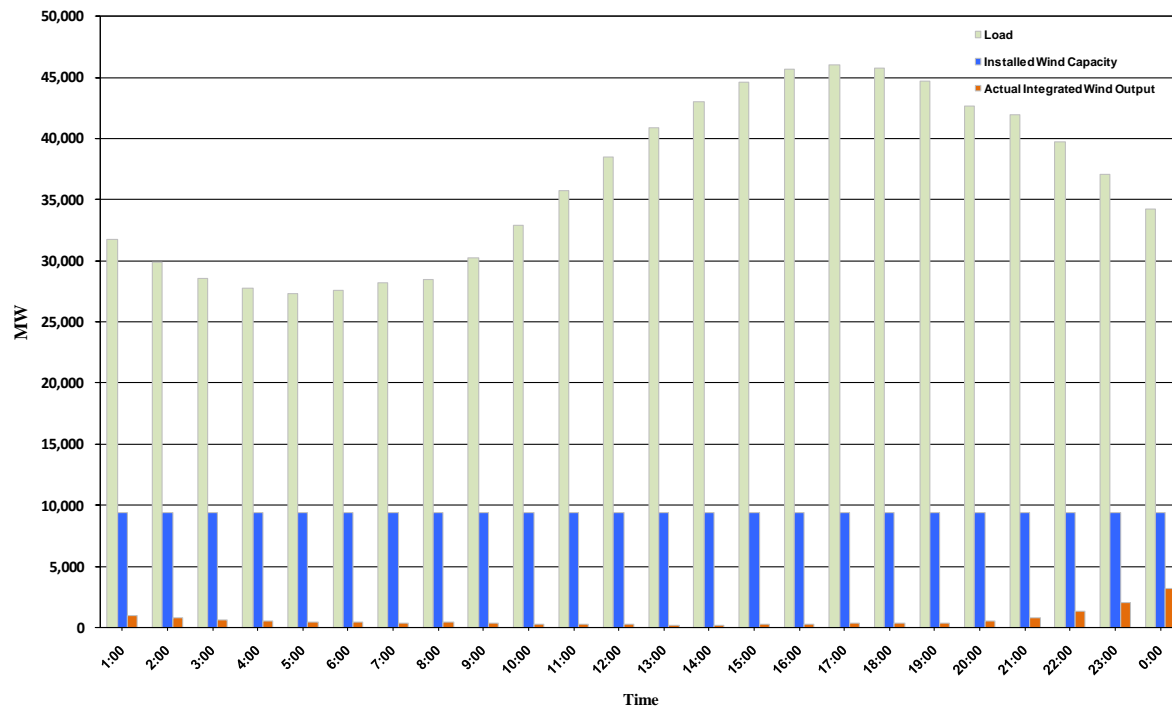




ERCOT Grid Operations Wind Penetration Report: 09/04/10

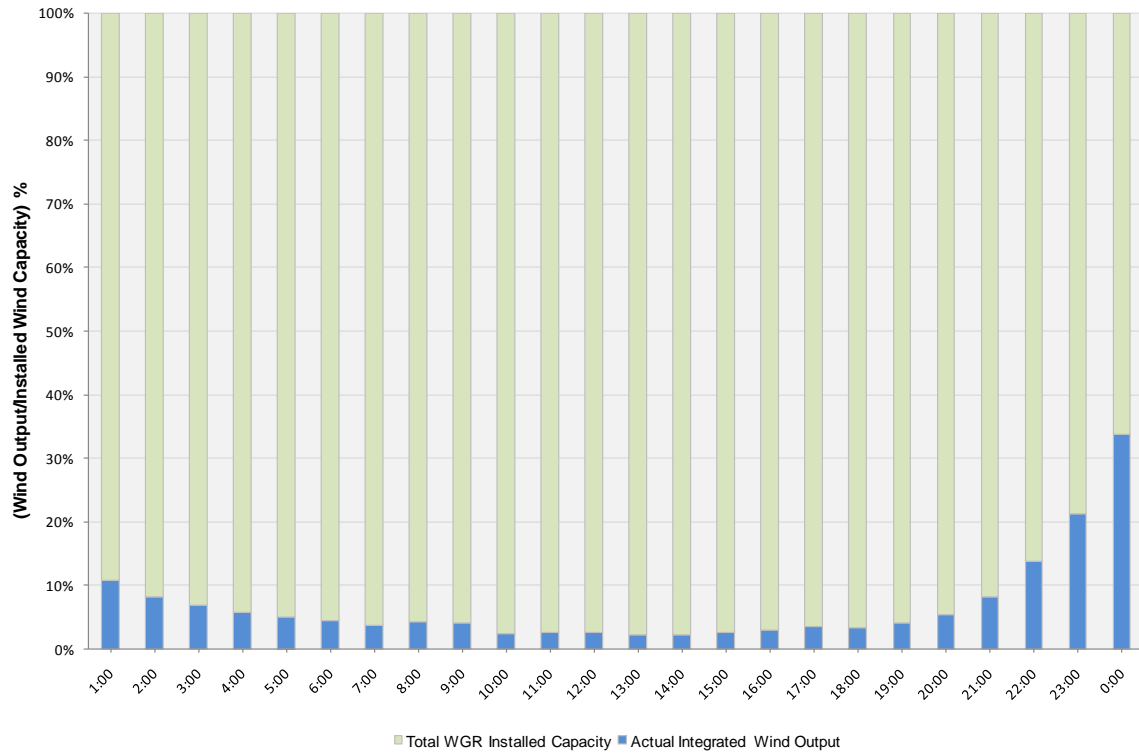
Peak Load	45,995 MW
Load Peak Hour	17
Wind Record 06/12/10	7016 MW
Max Wind value	3683 MW
Wind Peak Hour	23:59:56
Wind Penetration %	11.23

Hourly Average Actual Load vs. Actual Wind Output
09-04-2010

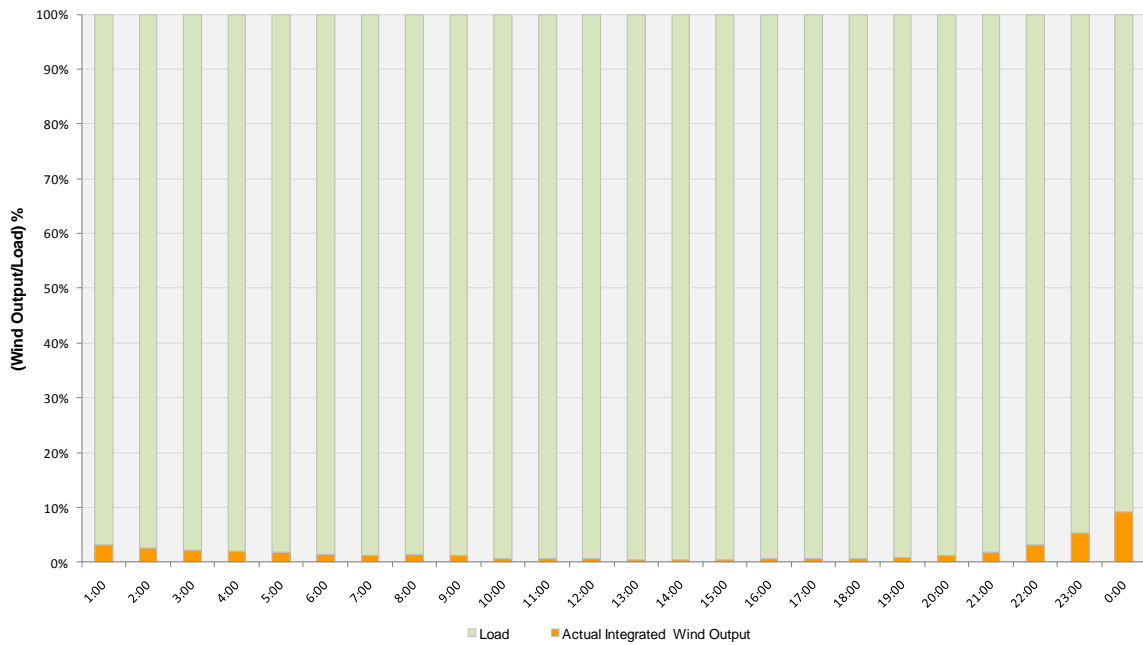




Actual Wind Output as a Percentage of the Total Installed Wind Capacity
09-04-2010



Actual Wind Output as a Percentage of the ERCOT Load
09-04-2010





ERCOT Load vs. Actual Wind Output 08/28/10 - 09/04/10

